



Groveland Community Services District Fire Department / CALFIRE

18966 Ferretti Road Groveland, CA 95321



Staff Report
November 1, 2024

To: Board of Directors

From: Andy Murphy, Assistant Chief
By: Travis Chunn, Fire Captain

Subject: Monthly Activity Report – October 1, 2024 – October 31, 2024

Operations:

On October 21st, 2024, at 6:50 PM, GCSD Engine 781 and Tuolumne County Engine 631 were dispatched alongside CALFIRE Engine 4466 and CALFIRE Engine 4476 to a vegetation fire on Old Highway 120. Upon arrival, crews discovered that a stump had been set on fire. The responsible party was educated on proper burning guidelines to prevent future incidents.





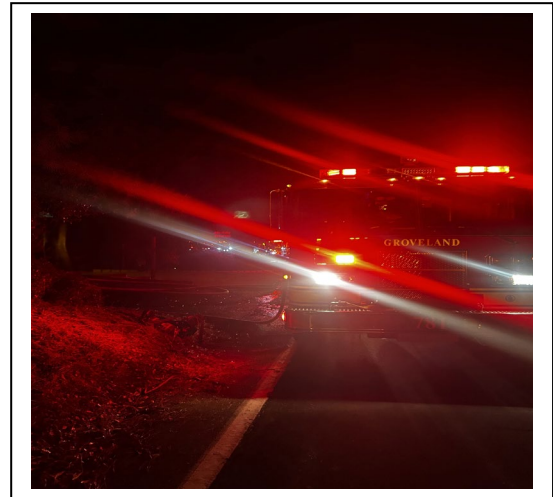
Groveland Community Services District Fire Department / CALFIRE

18966 Ferretti Road Groveland, CA 95321



Operations:

On October 28th, 2024, at 7:23 PM, GCSO Engine 781 and Tuolumne County Engine 631 were dispatched to a possible structure fire, along with CALFIRE Engine 4466, CALFIRE Engine 4476, and additional resources from MMU. Upon arrival, Engine 781 reported seeing light wispy smoke coming from the front of the structure. Further investigation revealed that fire had extended into the chimney chase and flue. Crews quickly knocked down the main fire, and resources remained on scene for several hours to ensure there was no further extension of the fire.





Groveland Community Services District Fire Department / CALFIRE

18966 Ferretti Road Groveland, CA 95321



Apparatus and Equipment:

Apparatus	Description	Status
Engine 781	2009 Pierce Contender	In Service
Engine 787	2000 Freightliner FL112	In Service
Engine 783	1997 International Model 15	In Service
Utility 786	2008 Chevrolet 2500	In Service

Training:

In addition to our monthly Emergency Medical Technician (EMT) curriculum and engine company performance standards, Battalion personnel received the following specialized training:

- FAE Herrera- Assisted Columbia College Fire Academy with Common Passenger Vehicle Extrication class, and he opened his Instructor 2 and Auto Extrication task books
- Hose Evolutions
- Extrication
- Patient Packaging
- Ladders
- Narcan
- Epinephrine
- AED & Lucas Device
- **Battalion Training Incident Command**
- **Battalion Training PG&E Grounds / Facility**

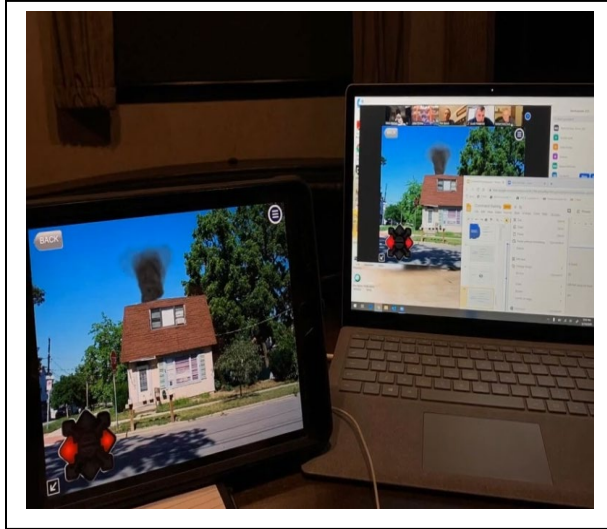


Groveland Community Services District Fire Department / CALFIRE

18966 Ferretti Road Groveland, CA 95321



Training:



Battalion training in October involved realistic scenarios that simulated high-stress environments in command and control of incidents via tabletop simulations. These exercises fostered teamwork and communication among participants. Regular drills helped refine tactical skills and improve decision-making under pressure. The focus on realistic scenarios prepared teams to handle a variety of challenges in the field. Overall, the training enhanced both individual and collective performance in critical situations.





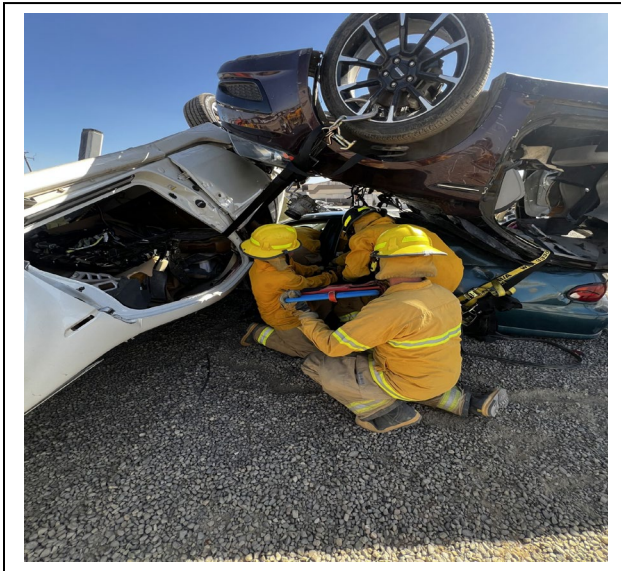
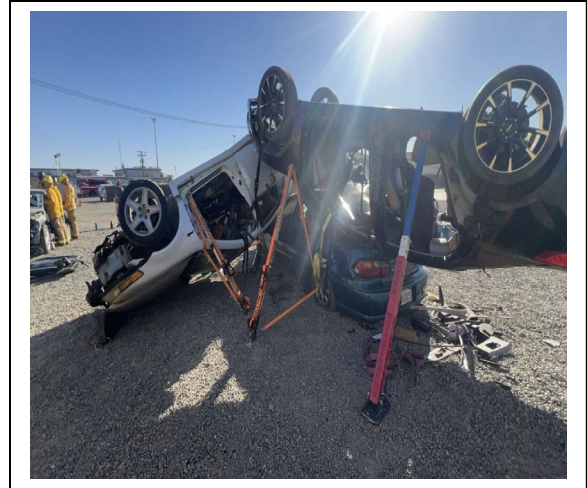
Groveland Community Services District Fire Department / CAL FIRE

18966 Ferretti Road Groveland, CA 95321



Fire Department News:

Fire Apparatus Engineer Rene Herrera assisted the Columbia College Fire Academy by teaching techniques for extricating passengers from common vehicles. He emphasized the importance of safety procedures during the training. Additionally, Herrera focused on safely extricating passengers from electric vehicles. This segment addressed unique safety procedures, and the specific challenges posed by electric vehicles in emergency scenarios



Oct-24

STATION 78

Alarm Sounding	5
Odor Investigation	0
Debris Fire	0
Medical Aid	25
Fire Menace Standby	0
Fire Other	0
Haz Mat	1
Landing Zone	0
Plane/Heli Crash	0
Public Assist	6
Smoke Check	1
Structure Fire	1
Commercial Structure Fire	0
Vegetation Fire	1
Vehicle Accident	0
Vehicle Accident/Pin in	0
Vehicle Fire	0
TOTAL	40

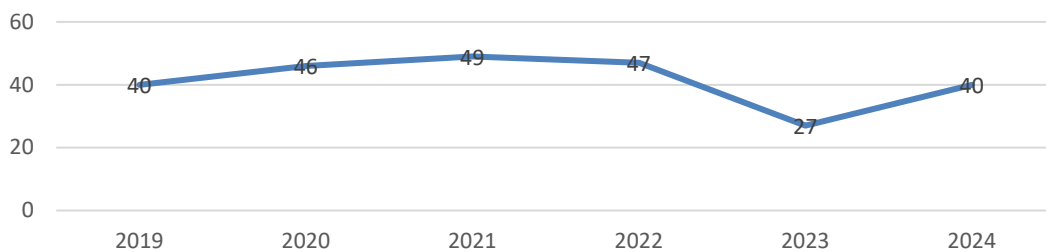


Auto Aid	Given
Tuolumne County	1
INC# 13602 Vehicle Accident N1A.	
TCFD Engine 631: 15 calls	

ALS	
YES	NO
20	5

Last Call Logged Run # 14645

GCSD TOTAL INCIDENTS 2019-2024



GCSD TOTAL INCIDENTS YEAR-TO-DATE

